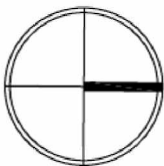
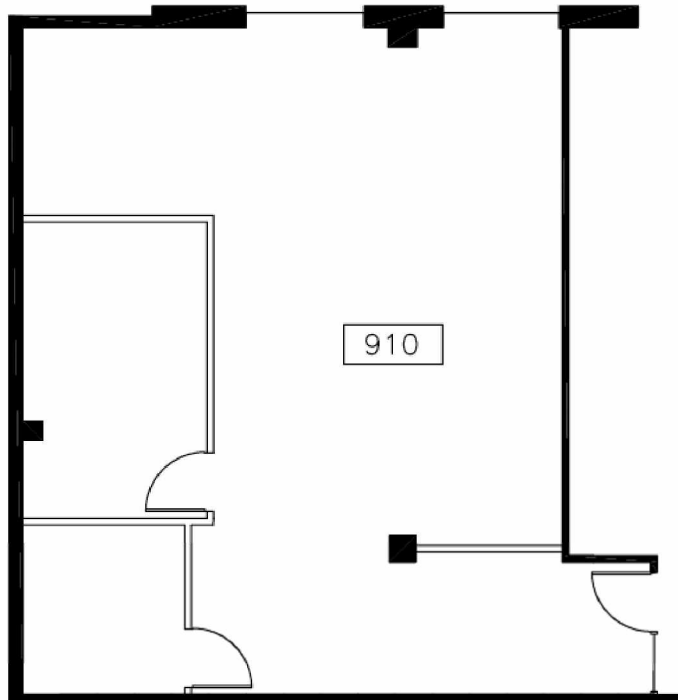
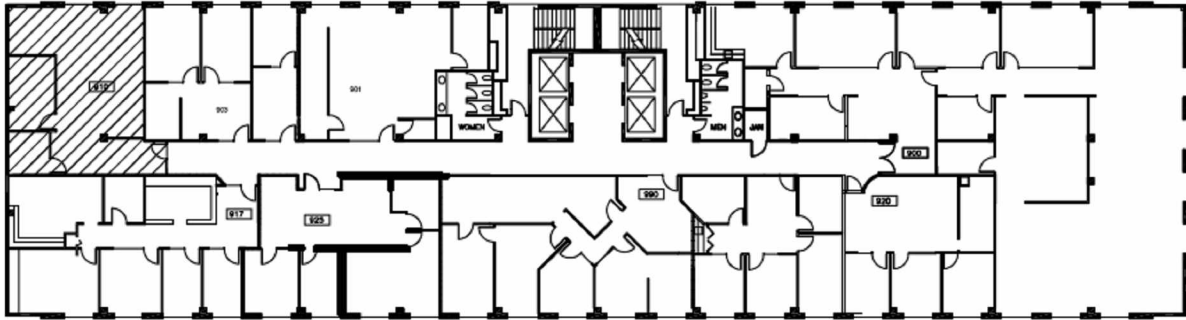


ACTIVE VOICE BUILDING

2033 SIXTH AVENUE, SEATTLE, WA 98121



NORTH

ACTIVE VOICE BUILDING SUITE 910
APPROX. 1,088 R.S.F.



FOR LEASING INFORMATION:

ED LUERA
eluera@cliseproperties.com
(206) 623-7500
(206) 255-5440

CLISE PROPERTIES, INC.



1700 SEVENTH AVENUE, SUITE 1800
SEATTLE, WA 98101
WWW.CLISEPROPERTIES.COM